



M4-D1 Professional Embedded DVR Quick-Start Guide



M4 Series Standalone DVR

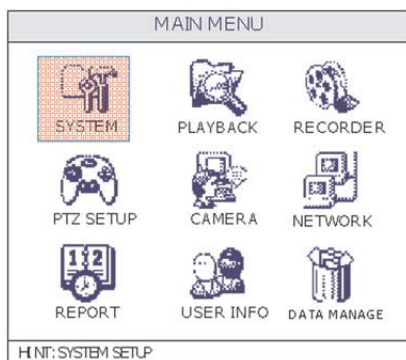


Important! Setup the DVR using the Hand-held remote or Front Panel buttons before installing the Net Client Software.

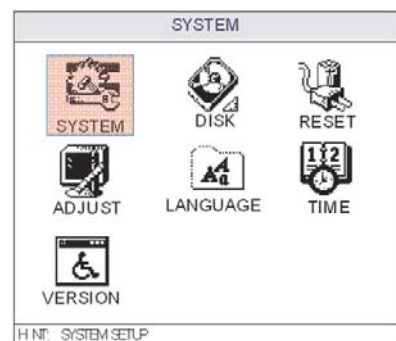
Section 1 - Using the Hand-held Remote

A) Using the remote, press "Menu", then type in the default password (333333) using the number keys (on the remote).

B) Press the "Down" arrow until "OK" is highlighted, then press the "Enter" button. Press "OK" when it says "Welcome Manager". The "Menu" will disappear once the Manager is logged in, so depress the "Menu" button again to get back to the menu.



Start by highlighting the "System Configuration" Icon and press the button "Enter" on the Hand-held Remote.



c) When the menu appears, highlight the "System Configuration" Icon, then press "Enter". The next menu will show a "System Tools" Icon. (This is confusing. Please note carefully there are two separate "System" Icons). At the second "System Tools" Icon, press "Enter". The "Setup" menu will appear.

d) Select a number for this DVR. The default is "001". If this is the first system you are installing, leave it at 001. If you have already used "001", change this number by pressing the "Right" arrow until the correct digit is highlighted. Using the number keys, change the number, then press the "Down" arrow. The cursor will move to the next entry box.



Section 1 - Using the Hand-held Remote (cont)

SYSTEM SETUP				
System ID	011	Seq. Dial	005	Sec
Auto Record	Off	End Of Disk	Stop	
Video Format	PAL	KeyLock Time	600	Sec
Screen Show	All	Beep Alarm	Off	
Record Ahead	Off	Rec. Quality	Basic	
Frame Inter	00	Resolution	800*600	
Video Switch	0	Stream Type	CBR	
Alarm Switch	Off	Frame Rate	Full	
Ok		Cancel		

Use the down button to move the cursor to the next menu item. To toggle through the choice options, use the right button

E) Skip down to the entry box that says "Auto Record". The default is "Off". If you are using "Motion Detection Recording", leave this to off. However, if you are using a "Timed" recording, you can turn it "On" and the DVR will start recording on Power-Up. Skip down to "Video Format". Change this entry to "NTSC" by using the "Right" arrow.

F) Skip down to "Record Ahead". The default is "Off". It is recommended you change this entry to "On" if you are using "Motion Detection". This will allow the system to "Record Ahead" when motion is detected.

G) For now, leave the other entries at the "Default" settings.

H) Important: Using the "Down" arrow, scroll down to "OK", and press "Enter" when it is highlighted. After pressing "Enter", you will be back at the "System Tools" Icon. Press the "Cancel" button once, and you will be back at the Main (System) menu. This is a slightly confusing point, so be careful.

I) At the Main menu, scroll down to the "Network" Icon. Press "Enter" twice, and you will be at the "Network Communication" menu. Enter the IP address, Subnet Mask, and Gateway. Leave the default "Server Port" at 2000, and the default protocol at "TCP". Scroll down to "Link Speed", choose "Auto Mode", then press the "Enter" button.

J) You will then be at the "Network" Icon. Press the "Cancel" button, then scroll up to the "System" Icon, and press "Enter". You will see a "Reset" Icon to the right. Highlight the "Reset Icon, then press "Enter".

K) Important: At this screen, there are two choices, "OK" and "Cancel". The default is "Cancel". You must highlight "OK", then press the "Enter" button, or the system will not reset. After pressing "Enter", wait a few minutes, then go to the PC that is connected to the same LAN as the DVR.



Section 2 - Setting up the Network Client

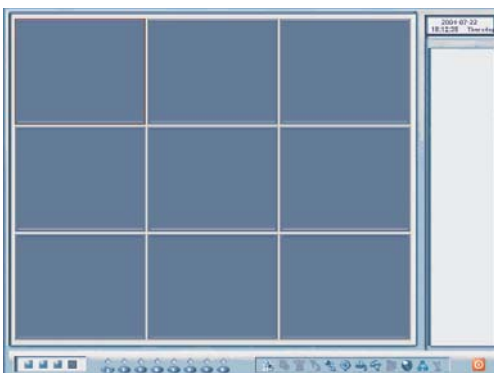
Install the Net Client Software
Find the CDROM that came with the system, or download the "M4-D1" Net Client Software from our website.



A) Install the Net Client Software. Upon completion, there will be a "Net Client" Icon on your desktop. Launch the software.

B) Once launched, there will be a tool bar at the bottom of the screen. Find the Icon that is called "LocalSetup", and click on it. Go to "LocalConfig", then scroll down to "Video Format Setup". The default is "PAL". Select "NTSC", then click "OK".

C) Go back into "LocalSetup", then "LocalConfig", and this time select "Host Setup". In the middle of the screen, you will see an "Insert" button". Click on it, then enter the IP address, a name for the system, the port number (default is 2000), and the number of channels. Click on "OK".



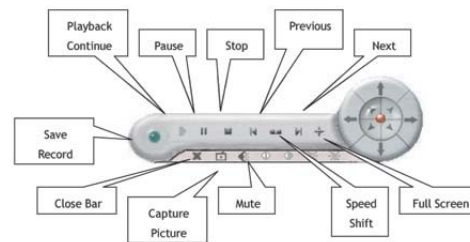
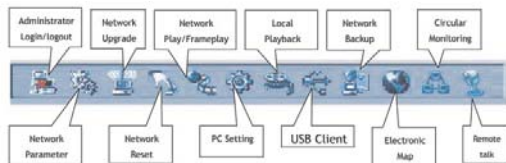
Once the IP address of the M4-D1 DVR is entered into the "localSetup", you can right-click on any window and click "Connect"

D) You should now be back at the main screen, but the windows will be all blue. Place your cursor on the first blue box, right click, then select "Connect". Select the name of the DVR, select the Channel you wish to view, then enter the "Password" (the default is 333333).

E) In the second box, repeat this process, and select the next camera you would like to display. Continue this process until you see all your cameras.



Section 2 - Setting up the Network Client (cont)



p) If you want to playback images, you must first login to the DVR. To do this, go to the tool bar at the bottom of the page and select "ManagerLogin". Select the DVR system you want to login to, and enter in the default password "333333". If Net Client finds the system, it will be displayed in the box on the right.

q) Once you are logged in as "Manager", you can right-click on any empty blue box and select "Netplay". Select the camera you want to playback, enter in the time frame, and click "OK". A list of the files available will appear. Highlight the file you want to view, then click on "Play".

r) If you double-click on the window that is playing back, the "Media Player" controls will pop-up. You can then "pause", "fast forward", or select "slow motion". In addition, if the window has a PTZ camera, you can control it by using the "media Player". Roll your cursor over the icons on the "Media Player", and you will see what they control. For more information on PTZ cameras, please consult your Users Manual.

s) If you would like to save a file, you can go to the tool bar at the bottom of the page, and select "Net Backup". Select the camera you want, enter in the time frame, and click on "OK". The list of available files will appear and you can save them to the "Net Client" PC.

Important! On the tool bar at the bottom of the Net Client page, there is a function called "Local Replay". This function will not playback files from the DVR until they are saved to the Net Client PC. To use this tool, download the files you want to view using "Net Backup" first.

t) That should be enough to get you started. For more information, consult your "User's Manual". There is an electronic version on the CDROM, or you can go to the DVR Products page on our website.

For more information, contact us at "Tech@SecureMasterUSA.com".